

# PHASE ONE, MID-RIVERS YACHT AND COUNTRY CLUB

Lying In  
Sections 1, 2, & 3, Township 38 South, Range 40 East  
Martin County, Florida

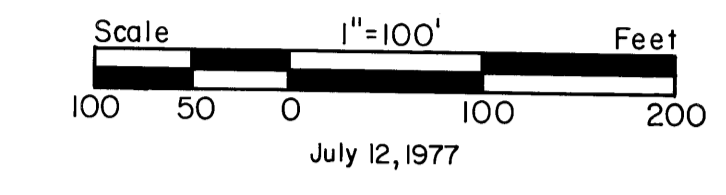
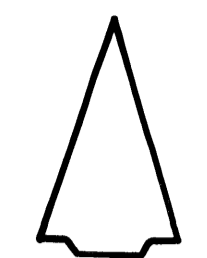
I, LOUISE V. ISAACS, CLERK OF THE CIRCUIT COURT OF MARTIN COUNTY, FLORIDA, HEREBY CERTIFY THAT THIS PLAT WAS FILED FOR RECORD IN PLAT BOOK 7, PAGE 23, MARTIN COUNTY, FLORIDA, PUBLIC RECORDS, THIS        DAY OF       , 1977

LOUISE V. ISAACS, CLERK  
CIRCUIT COURT  
MARTIN COUNTY, FLORIDA

FILE NO. \_\_\_\_\_

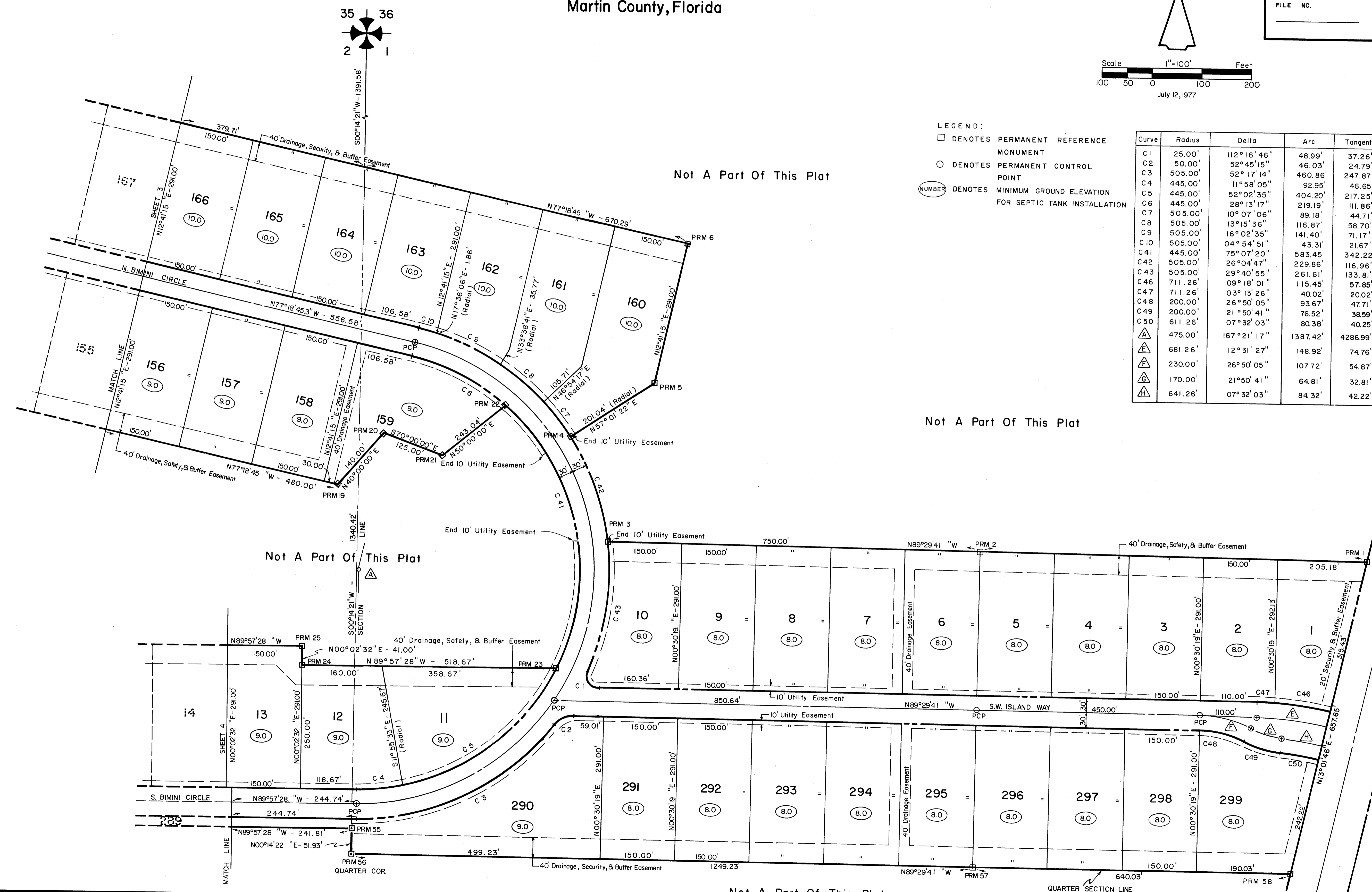
BY: \_\_\_\_\_  
DEPUTY CLERK

NORTH



- LEGEND:
- DENOTES PERMANENT REFERENCE MONUMENT
  - DENOTES PERMANENT CONTROL POINT
  - (NUMBER) DENOTES MINIMUM GROUND ELEVATION FOR SEPTIC TANK INSTALLATION

Curve	Radius	Delta	Arc	Tangent	Chord	Chord Bearing
C1	25.00'	112°16'46"	48.99'	37.26'	41.52'	S 33°21'18"E
C2	50.00'	52°45'15"	46.03'	24.79'	44.42'	N 64°07'48"E
C3	505.00'	52°17'14"	460.86'	247.87'	445.03'	N 63°53'55"E
C4	445.00'	11°58'05"	92.95'	46.65'	92.78'	N 84°03'30"E
C5	445.00'	52°02'35"	404.20'	217.25'	390.45'	N 52°03'10"E
C6	445.00'	28°13'17"	219.19'	111.86'	216.98'	S 63°12'07"E
C7	505.00'	10°07'06"	89.18'	44.71'	89.07'	S 38°02'10"E
C8	505.00'	13°15'36"	116.87'	58.70'	116.61'	S 49°43'31"E
C9	505.00'	16°02'35"	141.40'	71.17'	140.94'	S 64°22'37"E
C10	505.00'	04°54'51"	43.31'	21.67'	43.30'	S 74°51'20"E
C41	445.00'	75°07'20"	583.45'	342.22'	542.55'	S 11°31'48"E
C42	505.00'	26°04'47"	229.86'	116.96'	227.89'	N 19°56'14"W
C43	505.00'	29°40'55"	261.61'	133.81'	258.70'	S 07°56'37"W
C46	711.26'	09°18'01"	115.45'	57.85'	115.33'	S 81°37'16"E
C47	711.26'	03°13'26"	40.02'	20.02'	40.02'	S 87°52'53"E
C48	200.00'	26°50'05"	93.67'	47.71'	92.82'	S 76°04'38"E
C49	200.00'	21°50'41"	76.52'	38.59'	75.79'	S 73°34'56"E
C50	611.26'	07°32'03"	80.38'	40.25'	80.32'	S 80°44'15"E
△	475.00'	167°21'17"	1387.42'	4286.99'	944.22'	S 06°21'53"W
△	681.26'	12°31'27"	148.92'	74.76'	148.62'	S 83°31'57"E
△	230.00'	26°50'05"	107.72'	54.87'	106.74'	S 76°04'38"E
△	170.00'	21°50'41"	64.81'	32.81'	64.42'	S 73°34'56"E
△	641.26'	07°32'03"	84.32'	42.22'	84.26'	S 80°44'15"E



Not A Part Of This Plat

Not A Part Of This Plat

Not A Part Of This Plat

Not A Part Of This Plat

S.W. Murphy Rd.